



TELEDYNE ISCO
Everywhereyoulook™

Flowlink® *Global*

Any Data, Any Where,
Any Time and Any Device!



Any Data, Any Where, Any Time and Any Device!

The software solution to complete your flow monitoring program

Flowlink Global is a Web User Interface (Web UI) to monitor the data and site conditions for your flow monitoring programs.

While Flowlink configures devices and analyzes site data, Flowlink Global provides an easy-access portal that enables the user to view, organize, report and export site and device data. However, Flowlink Global is not just about passive viewing. Flowlink Global allows monitoring of incoming data to ensure sites/devices are functioning properly. Flowlink Global collects and displays site and device alarms to show you where your attention is needed most. Clearing of an alarm is as easy as a click of a button.

Flowlink Global centralizes your flow data to a web site that is accessible by PCs and mobile devices. The Web UI provides comprehensive monitoring, as well as far ranging portability. This Web UI can run on Windows or iOS operating systems and a variety of web browsers: Internet Explorer, Safari, Google Chrome, Mozilla Firefox and Opera.

The Flowlink Global interface enables you to:

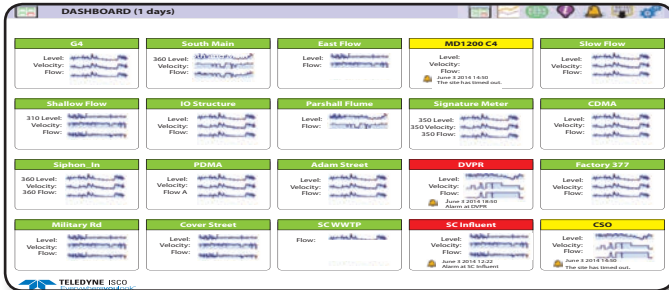
- Monitor Isco equipment remotely for operation and data logging
- View data from remotely equipment anywhere
- Prepare graphical and tabular reports of flow monitoring data
- Export data summary for historical reference
- Prioritize field crew activities
- Easily identify location of sites using the Map feature
- View and clear site alarms
- Quickly view site conditions on the Dashboard





Dashboard

The Dashboard Page is an overview of the sites' flow data activity. Quick-view of alarm status, and display data summaries of monitored sites. When an alarm is present, the colors indicate the alarm status and alarm details.



Graph

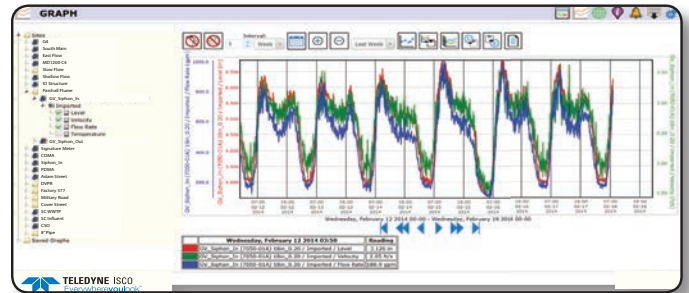
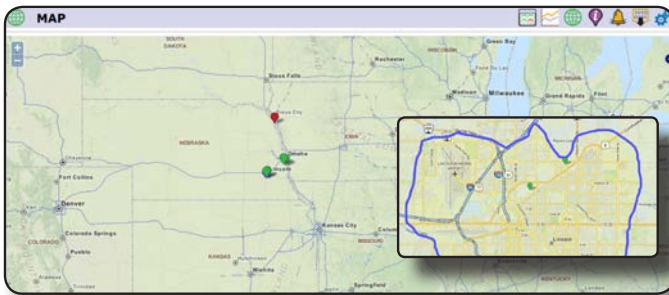
The Graph Page displays data sets in graph format (linear and scatter).

- Populate the graph with multiple data sets and data types.
- Use templates to quickly and easily select multiple graph settings (sites, devices, data types and the time interval). The SMART graph templates maintain consistent and quick retrieval of available site data.
- Use the Save Graph function to save settings displayed in the graph. Reopening a saved graph automatically updates plots with the latest data.
- Click the Report button to generate and export a report based on the graph data sets.



Map

The Map Page shows the locations for monitored sites as well as alarm status by color. View maps in either "satellite view" (topography) or "streets view". Site information and site data overlays the site pin marker.



Site Information

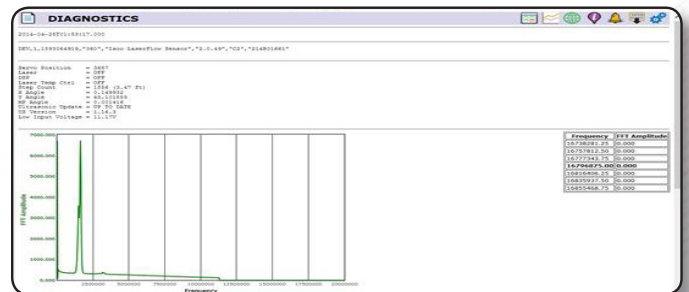
The Site Information Page displays all available information about the site such as devices installed, graphs, alarms, location, diagnostics, device generated information and more.



Alarms

The Alarms Page shows a detailed list of site/device generated alarms. View all alarms at once or filter them to see active alarms. Clear alarms with the click of a button.

ID	Site	Alarm ID	Date (UTC)	Type	Text	Charged	Clear Alarm
296	SC InFu	1	March 7 2014 13:40	I	Alarm at SC InFu for Below -10		Clear Alarm
295	SC InFu	1	March 7 2014 09:25	I	Alarm at SC InFu for Below -10		Clear Alarm
288	SIG DVPR	1	March 5 2014 12:22	I	Alarm at SIG DVPR for 88878		Clear Alarm
47	MORiverET	2	February 19 2014 16:30	I	Alarm at MORiverET for Temp above 25	X	
46	MORiverET	1	February 19 2014 16:28	I	Alarm at MORiverET for Below -10 at Mo River	X	
36	MORiverET	1	February 9 2014 23:45	I	Alarm at MORiverET for Below -10 at Mo River	X	
34	MORiverET	2	February 8 2014 10:45	I	Alarm at MORiverET for Temp above 25	X	
33	MORiverET	2	February 7 2014 10:50	I	Alarm at MORiverET for Temp above 25	X	
32	MORiverET	1	February 6 2014 19:35	I	Alarm at MORiverET for Below -10 at Mo River	X	
31	MORiverET	2	February 6 2014 10:45	I	Alarm at MORiverET for Temp above 25	X	
30	MORiverET	1	February 5 2014 17:45	I	Alarm at MORiverET for Below -10 at Mo River	X	
28	MORiverET	1	February 4 2014 20:50	I	Alarm at MORiverET for Below -10 at Mo River	X	
26	MORiverET	2	February 3 2014 09:35	I	Alarm at MORiverET for Temp above 25	X	
25	MORiverET	1	February 3 2014 04:50	I	Alarm at MORiverET for Below -10 at Mo River	X	
24	MORiverET	1	February 2 2014 09:40	I	Alarm at MORiverET for Temp above 25	X	
23	MORiverET	1	February 2 2014 04:55	I	Alarm at MORiverET for Below -10 at Mo River	X	
22	MORiverET	2	January 31 2014 09:35	I	Alarm at MORiverET for Temp above 25	X	
21	MORiverET	1	January 30 2014 09:30	I	Alarm at MORiverET for Below -10 at Mo River	X	



Group and User Administrative

The Group and User Administrative options define user privileges and display properties. The administrator can selectively assign user access to sites and/or data types.



Data Export

The Data Export Page exports data in comma-separated value (CSV) format. Data can be selected based on type, time and range.

The Flowlink Family

Teledyne Isco offers a family of Flowlink software products.



Flowlink LE provides capabilities such as instrument configuration, data retrieval, and data exporting. This software produces pre-defined graphs and tables that contain a single type of data such as level or velocity, for a quick assessment of site conditions.



Flowlink 5.1 software is a full-featured version for small and large flow monitoring projects. In addition to the features of Flowlink LE, Flowlink 5.1 generates user-customized graphs and tables containing many data types with statistical analysis. The Flowlink 5.1 database can be accessed by a single user at a time.



Flowlink Pro is an enterprise version that includes the features of Flowlink 5.1 and supports multiple users with differing roles. This server/client configuration accepts "pushed data" from sites equipped with Isco communication modules via the Internet for hands-off data collection. It also includes advanced server-based alarm notifications.



Flowlink Global is a web based application to monitor and service sites in your Flowlink Pro database. Flowlink Global provides an easy to access portal to sort, assemble, organize, review, report and export site and device data, GIS mapping, and a dashboard for quick view of site conditions and alarms - all the features that field crews need on the go.

4700 Superior Street • Lincoln, NE 68504 USA
Phone: (800) 228-4373 • (402) 464-0231

Brochure L2207 6/14

© 2014 Teledyne Technologies Incorporated

www.isco.com