

Avalanche Locking Kit

Installation Guide

Instruction Sheet
60-2972-001

Overview

The Avalanche Locking Kit (part #68-2970-014) prevents tampering and vandalism to the Avalanche sampler. The kit uses two cables, joined by a two-part hasp and padlock to prevent unwanted access to both the sampler controller and refrigerated compartment.

Kit Components

- This instruction sheet
- Y-Cable with Hasp Eye & 2 Hooks
- Straight Cable with Hasp Arm & 1 Hook
- Padlock

The locking kit is made up of two unique cables and a padlock (Figure 1). No tools are required to install the locking kit.

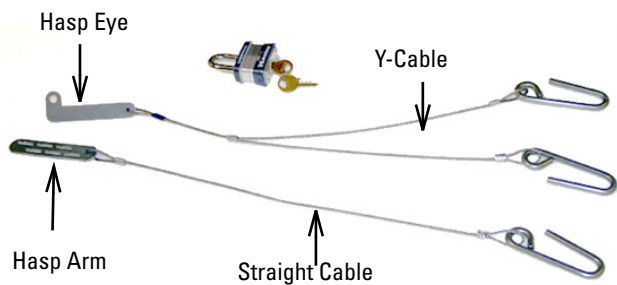
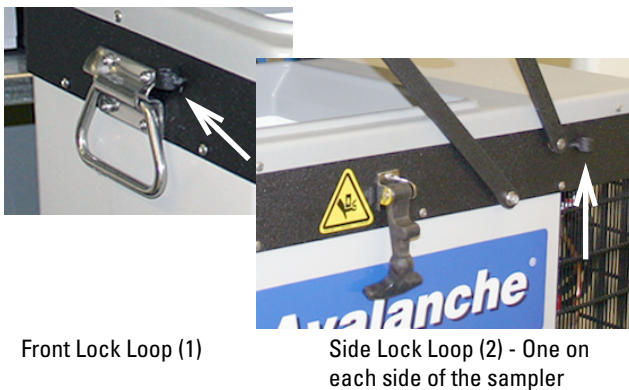


Figure 1: Kit Components

Both cables are attached to the unit by passing the hooked end through the lock loop on the Avalanche sampler case, as shown in Figure 2, and then linking the cable hasps across the controller top cover.



Front Lock Loop (1)

Side Lock Loop (2) - One on each side of the sampler

Figure 2: Lock loop locations

Note
Care should be taken to orient the hooks as indicated in the following procedure.

Installation

Note

The refrigerated compartment cover must be open (Figure 3) to install the straight cable hook.

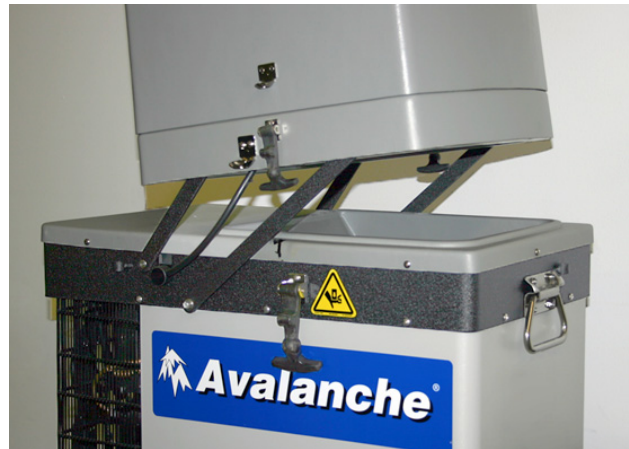


Figure 3: Sampler with cover open

1. Place the hook of the straight cable through the lock loop on the front of the sampler. Insert the hook by passing the straight section **down** through the lock loop, as shown in Figure 4. Do not rotate the hook into the upright position until after the refrigerated compartment cover is closed and latched.



Figure 4: Straight cable hook installation

2. Fully close and latch the refrigerated compartment cover and the controller top cover, with the draw catches engaged, as shown in Figure 5.



Figure 5: Covers closed with catches engaged

3. Place the left and right hooks of the Y-cable through the lock loops located on each side of the sampler. Insert the hooks by passing the straight section **down** through the lock loop and then rotate them until the eyelet is oriented up, as shown in Figure 6.

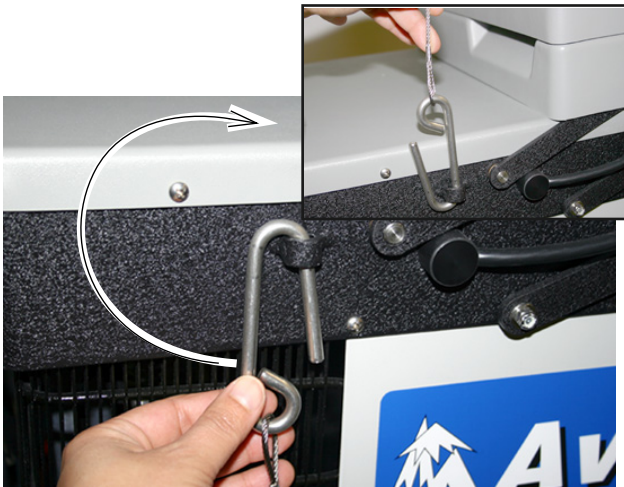


Figure 6: Y-cable hook installation

4. The straight cable hook can now be rotated so that the eyelet is oriented up.



Figure 7: Rotate straight cable hook upward

5. Pull both cables across the top of the unit (Figure 8) and join the hasp arm and hasp eye as shown in Figure 9. Ensure the hasp eye is placed in the hasp arm slot that provides the tightest cable arrangement across the controller cover.



Figure 8: Y-cable across controller top cover



Figure 9: Hasp eye through hasp arm

Note

Proper cable tension (determined by the hasp eye location on the hasp arm) is required to ensure the locking kit functions properly.

6. Lock the cables together, and secure the sampler by placing the loop of the padlock through the hasp eye, as shown in Figure 10.

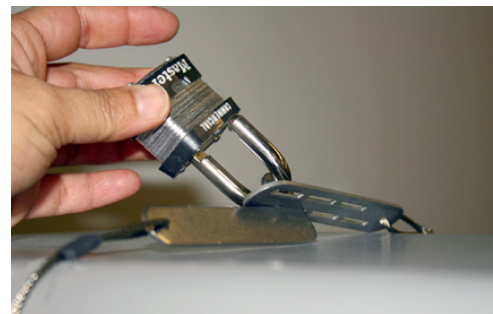


Figure 10: Padlock through hasp eye

Teledyne Isco

P.O. Box 82531, Lincoln, Nebraska, 68501 USA
Toll-free: (866) 298-6174 • Phone: (402) 464-0231 • Fax: (402) 465-3001
E-mail: IscoService@teledyne.com

Teledyne Isco is continually improving its products and reserves the right to change product specifications, replacement parts, schematics, and instructions without notice.

