

Mixer Kits

Air Driven Mixer for 500D/HV
and 1000D Syringe Pumps

*When you need consistent mixing
coupled with precise flow.*

If you are looking to keep fluids in suspension, maintain the viscosity of a material or manage a more homogenous flow you will need to add mixing to your application. When coupled with a Teledyne ISCO Syringe Pump (500D, 500HV, or 1000D) you can also have precise dosing of your material. Teledyne ISCO provides you with an air driven mixer, and an adaptor package to attach the mixer to the pump. These two components make up the mixer kit and are required for the mixer to operate.

The kit consists of two parts:

Mixer

- Pump mounted mixer used for moving slurries or viscous fluids along while keeping fluids in suspension.
 - Powered by an air driven motor with with variable speeds up to 1700 rpm
 - Designed for the 500D, 500HV, and 1000D syringe pumps
 - Impeller specifically designed to work with Teledyne ISCO Pumps

Adaptor Package

- Contains components to attach a mixer to the pump and includes mixer impeller designed exclusively for use with Teledyne ISCO pumps
- High temperature/high accuracy transducer
- Cap plug to allow operation of the syringe pump with the mixer removed



*Typical D-Series pump configuration
with mixer assembly.*



Applications

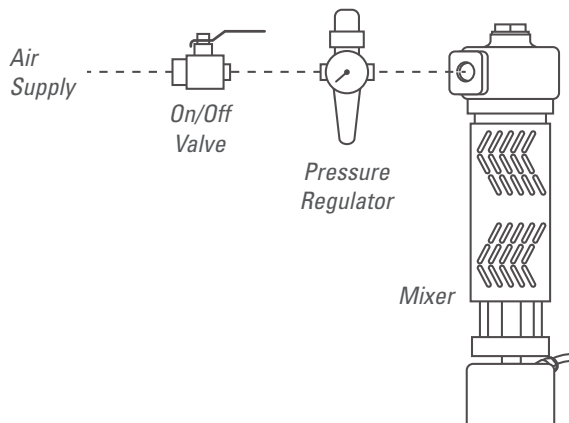
- Biomass slurries
- Catalyst feed for chemical process development
- Non-soluble particulates

Standard Features:

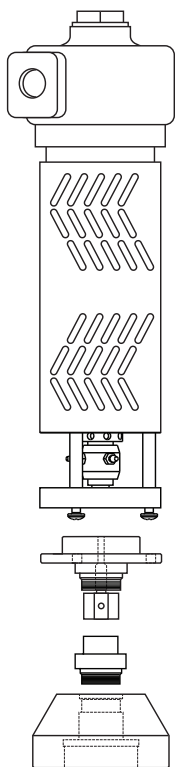
- 3/8" NPT cylinder cap ports
- Externally mounted high temperature/high accuracy pressure transducer ($\pm 0.1\%$)

Specifications for user supplied components (Air mixer only)

- Air supply ON-OFF valve
- Pressure regulator – to control motor speed
- Connection lines and fittings – 1/8" NPT air motor port
- Maximum air pressure source: 80 psi (5.6 kg/cm²)
- Maximum air consumption: 27 cfm (47.0 m³/h)
- Maximum Mixer Speed: 2,500 rpm



Ordering Information:



To order the mixer package, you must select **one item from each category below.**

Mixer (Standard in each kit)

Consists of air motor, magnetically coupled mixer and bottom plate to connect to an ISCO adaptor.
(Includes Air Mixer Service Kit)

500D, 500HV, 1000D Pumps.....250000210

Adapter Package

- Mixer to pump adapter
- Stirring shaft and impeller
- High Temperature/high accuracy pressure transducer
- Cap plug

500D, 500HV Pumps 60-5364-542

1000D Pumps 60-5364-376

Teledyne ISCO

P.O. Box 82531, Lincoln, Nebraska, 68501 USA
Toll-free: (800) 228-4373 • Phone: (402) 464-0231 • Fax: (402) 465-3091

teledyneisco.com



Teledyne ISCO is continually improving its products and reserves the right to change product specifications, replacement parts, schematics, and instructions without notice.

