

# Wash Glands for D-Series Syringe Pumps

## Overview

Wash glands are used for additional corrosion protection and to improve seal life. The syringe pump can be equipped with a wash gland for flushing the cylinder of any residue from pumped liquid. The wash gland is a standard feature in the model 1000D pump, and is available as an option with the 500D and 100DM/DX pumps.

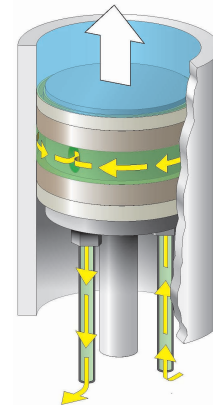
## Operation

The wash gland requires the following user-supplied items:

- Inlet and Waste containers (see Figure 4)
- Purified water or appropriate solvent
- Small pump with:
  - low pressure (less than 100 psi, 7 Bar)
  - low flow (approx. 100 to 500  $\mu\text{L}/\text{min.}$ )

A syringe pump equipped for cylinder washing has two  $\frac{1}{8}$ " or  $\frac{1}{16}$ " tubes on the back to feed and drain the wash gland. Either tube can be used for the inlet or outlet.

The small pump delivers the wash fluid through one of the two tubes to rinse the cylinder and seals. The second tube drains the wash fluid to waste or recirculates it. If the system is configured to recirculate the wash fluid, ensure that you change the wash fluid at regular intervals.

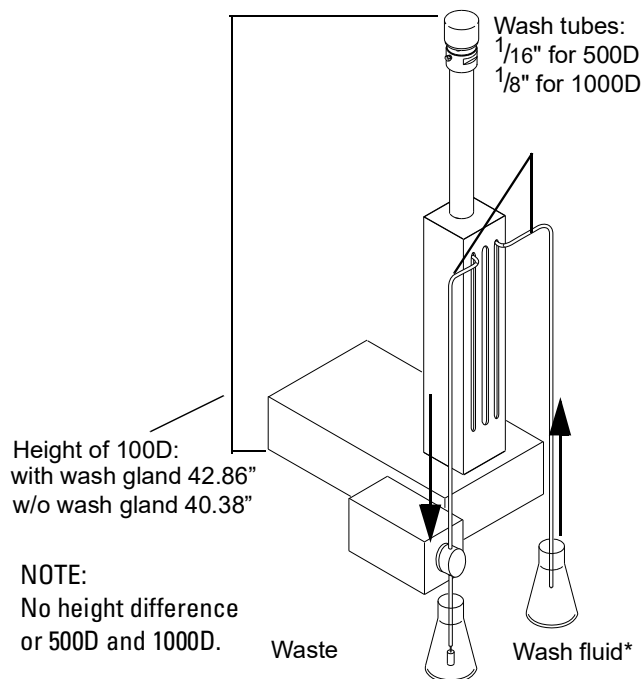


**Figure 2: Direction of flow**

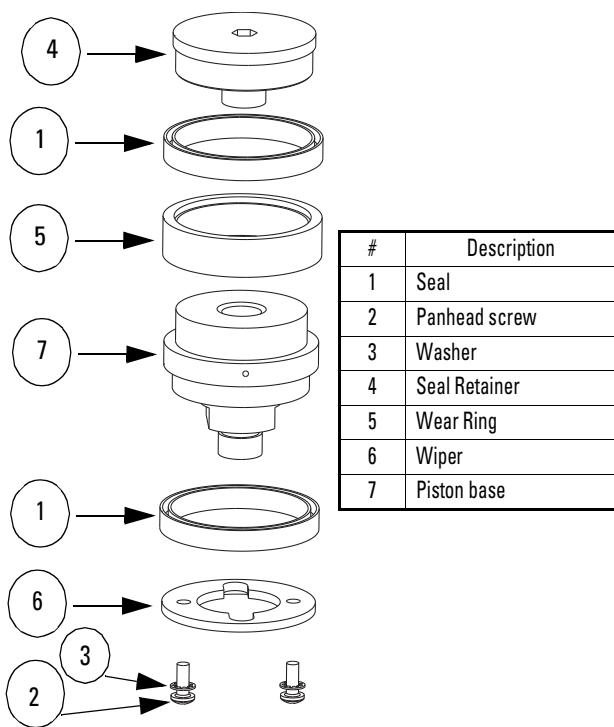
**Table 1: Parts required for 500D wash gland option\***

| Model                                                | Part Number |
|------------------------------------------------------|-------------|
| Wash Glands - Hastelloy- Not PED<br>Compliant for EU | 60-5364-171 |
| Wash Glands - Nitronic- Not PED<br>Compliant for EU  | 60-5364-094 |

\*Please note 500D can only be upgraded when ordered, it is not a retrofittable option.



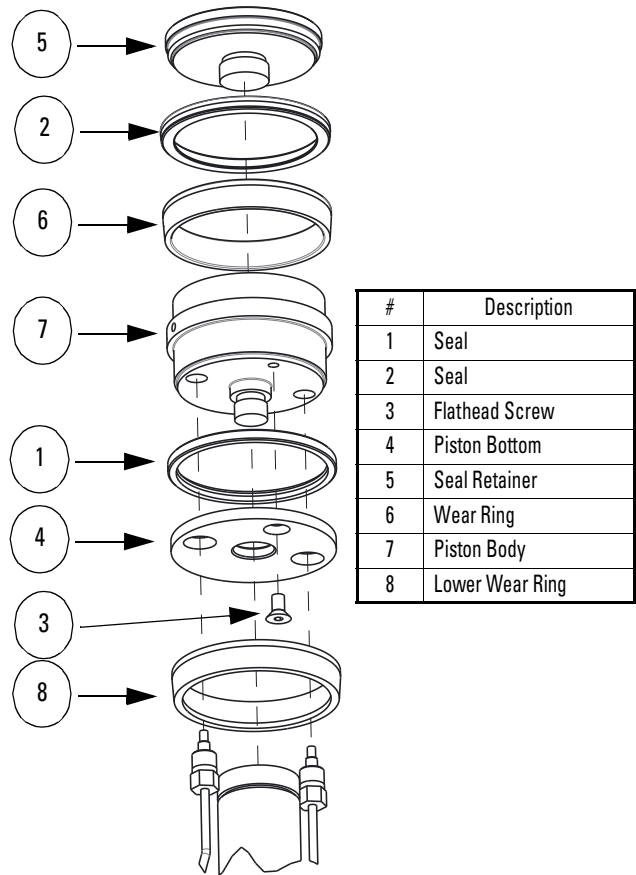
**Figure 1: Washing diagram**



**Figure 3: Illustration of 500D assembly**

**CAUTION**

The pressure in the 500D wash glands and lines must never exceed 175 psi (12 Bar). A wash gland pressure greater than the system pressure may force wash liquid past the pump's main seals and contaminate the delivery fluid and could potentially cause the wash gland to deform.



**Figure 4: Illustration of 1000D assembly**

**Teledyne Isco**

P.O. Box 82531, Lincoln, Nebraska, 68501 USA  
 Toll-free: (800) 775-2965 • Phone: (402) 464-0231 • Fax: (402) 465-3001  
 E-mail: IscoService@teledyne.com



Teledyne Isco is continually improving its products and reserves the right to change product specifications, replacement parts, schematics, and instructions without notice.